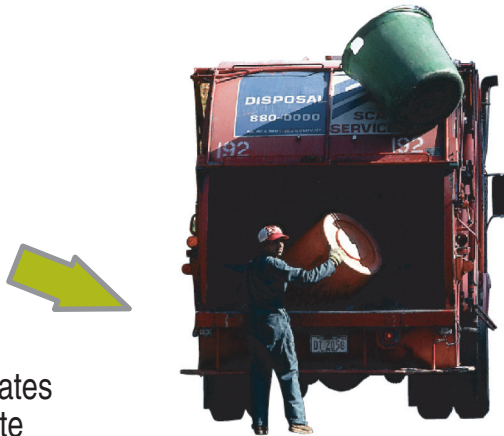


The Path From Trash To Energy



1 Each person in the United States generates about 4.5 lbs of waste per day or almost one ton per year.



2 Over 50 percent of this waste is deposited in municipal solid waste landfills in communities around the country.



3 Over time, each pound of waste generates 3-6 cubic feet of landfill gas containing:
-methane—a potent greenhouse gas
-carbon dioxide
-trace amounts of non-methane organic compounds

4 Landfill gas is a renewable energy source that can be collected and used in a number of ways, including:



Kilns/Thermal Applications



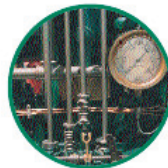
Natural Gas



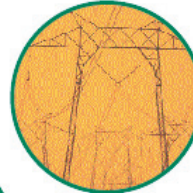
Vehicle Fuel



Boilers



Electricity



5 Your community is the big winner gaining cleaner air, improved safety, more jobs, and a local source of renewable energy. Together, LMOP and its partners are saving the earth one landfill at a time.